

26 February 2015

MEDIA RELEASE

IMPROVEMENTS TO LYTTELTON PORT LOG STORAGE AREA

A project to reseal the Lyttelton Port of Christchurch (LPC) 15,000 square metre log storage area in front of Norwich Quay started this morning (26 February).

The resealing will provide a better all-weather log yard and reduce dust and run off into the harbor.

The project will be completed in three stages. The middle of the yard will be upgraded first, followed by the eastern end and finally the western area. The project is expected to be finished in about four months but it could take longer depending on weather.

“We appreciate Lyttelton residents’ patience during the development,” said LPC Chief Executive Peter Davie. “We will be trying to minimise noise and any dust during the yard resealing. When the project is complete it will provide significant environmental improvements in the logging yard and for residents near the area.”

The logging yard at the Port is an area of high archeological value and the construction is subject to an Archaeological Authority issued by Heritage New Zealand

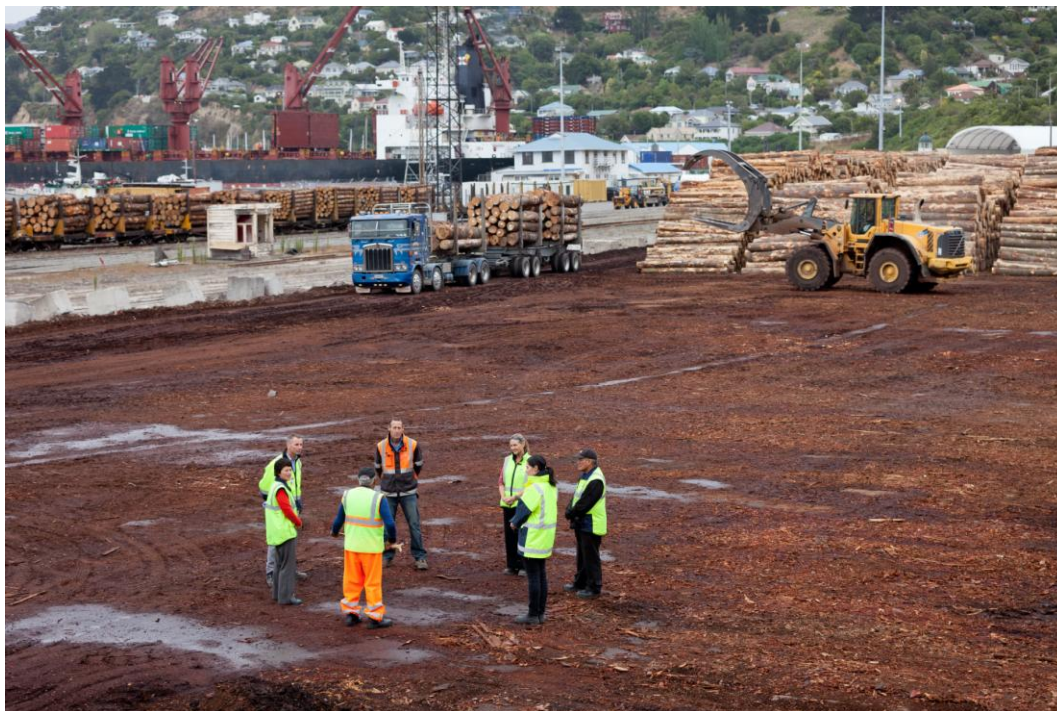


Photo caption: Cultural Monitor Riki Pitama from Rāpaki reciting a whakawaatea (blessing) on the Log Storage area where improvements will be made.

-Ends-

For further information contact:

Allanah James
Strategic Communications Manager
Lyttelton Port of Christchurch
021 709 652